



Building
something
great

Environmental Monitoring Report – Surface Water Monitoring Data

Talbragar Quarry

March 2024

Date Published: 2nd April 2024

The monitoring of pollutants provided in this report is undertaken as per the requirements of Environment Protection Licence 899 (EPL 899 – Boral Talbragar Quarry)

This report provides historical environmental monitoring data for Talbragar Quarry for the period January 2016 to Present day. If there is a gap in data presented in the report this is because there was no monitoring data to present for the relevant period.

| Talbragar Quarry Information | |
|------------------------------|---|
| Premise Details | Boral – Talbragar Quarry |
| Address | Brocklehurst, Dubbo, NSW, 2830 |
| Licensee | Boral Resources (Country) Pty Ltd |
| EPL No | 899 |
| EPL Location | https://apps.epa.nsw.gov.au/prpoeoapp/ViewPOEOLicence.aspx?DOCID=170462&SYSUID=1&LICID=899 |

Monitoring data in this report relates to the monitoring undertaken in the reporting period for the following environmental pollutants:

- Surface Water

Surface Water Monitoring

Water Quality Monitoring is conducted as per condition M2.1 of EPL 899. The water quality results for the reporting period are tabled below.

Sample Period: January 2019 – Present
 Licensee: Talbragar Quarry
 Licensee Address: Brocklehurst, Dubbo, NSW 2830
 EPL No: 899

Qualifications related to Water

L2.1 For each monitoring/discharge point or utilisation area specified in the tables below (by a point number), the concentration of a pollutant discharged at that point, or applied to that area, must not exceed the concentration limits specified for that pollutant in the table.

L2.2 Where a pH quality limit is specified in the table, the specified percentage of samples must be within the specified ranges.

L2.3 To avoid any doubt, this condition does not authorise the pollution of waters by any pollutant other than those specified in the tables.

L2.4 Water and/or Land Concentration Limits

POINT 1,2,13

| Pollutant | Units of Measure | 50 Percentile concentration limit | 90 Percentile concentration limit | 3DGM concentration limit | 100 percentile concentration limit |
|------------------------|-------------------------------|-----------------------------------|-----------------------------------|--------------------------|------------------------------------|
| Oil and Grease | milligrams per litre | | | | 10 |
| pH | pH | | | | 6.5-8.5 |
| Total suspended solids | milligrams per litre | | | | 50 |
| Turbidity | nephelometric turbidity units | | | | 40 |

L2.5 The concentration limits stipulated by condition L2.4 for EPA identification points 1, 2 and 13 are deemed not to apply when the discharge from the stormwater control structures (sediment dams) occurs solely as a result of rainfall measured at the premises which exceeds:

a) a total of 50 millimetres of rainfall over any consecutive 5 day period.

Note: A 50mm rainfall event is defined by the EPA endorsed publication "Managing urban stormwater: soils and construction" (Landcom, 4th Edition, 2004) as the rainfall depth in millimetres for a 95th percentile 5 day rainfall event for "Dubbo" which is also consistent with the storage capacity (recommended minimum design criteria) for Type D sediment basins for mines and quarries (see "Managing urban stormwater: soils and construction, Volume 2E, mines and quarries" (DECC, 2008).

L2.6 The concentration limit for Total Suspended Solids (TSS) and turbidity under condition L2.4 for licence discharge points 1, 2 and 13 is deemed not to have been breached where:
 (a) the sample complies with the turbidity limit at the time of the discharge; and

(b) the EPA is advised within 3 working days of completion of the TSS testing, of any TSS results above the licence limit.

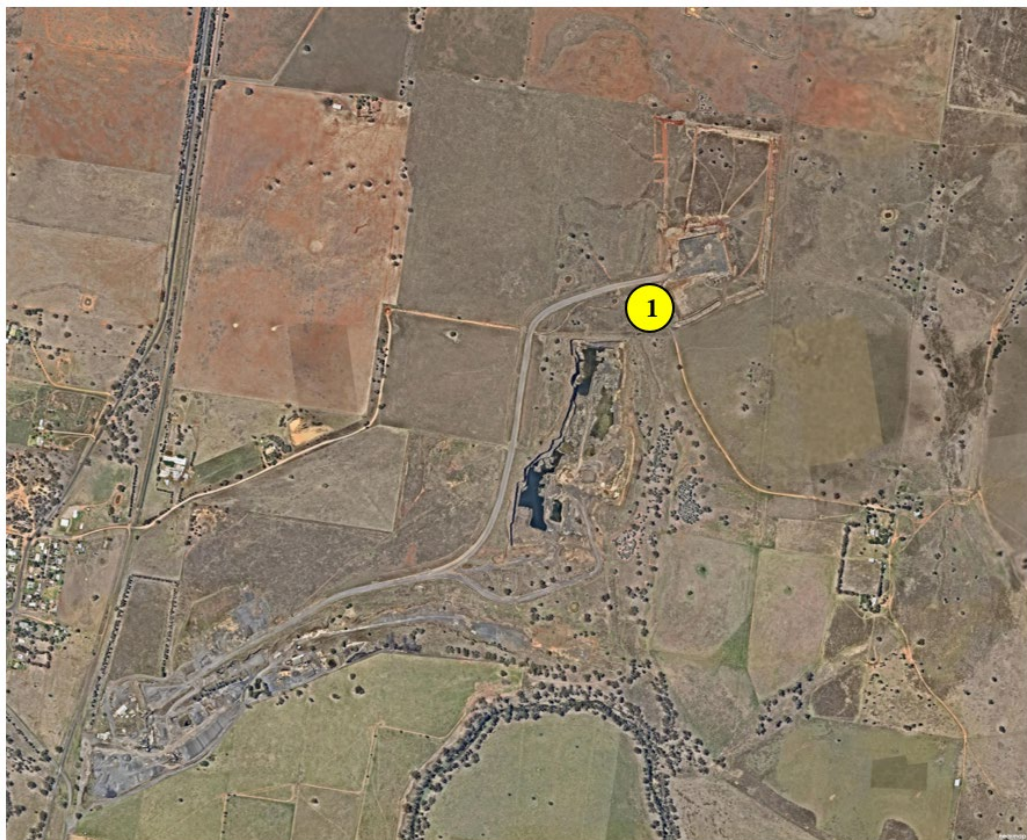
Note: The purpose of this condition is to expediate the assessment and subsequent discharge of the clarified water from the sediment basins.

Monitoring Frequency – Daily During Discharge

| Results – EPL 899 Monitoring Point 1 (Discharge Point from Sediment Basin) | | | | | |
|---|------------------------------|-----------|-------------------|--------------------------------------|-------------------|
| Sampling Date | Date Results Received | pH | Compliant? | Total Suspended Solids (mg/L) | Compliant? |
| | | | | | |
| | | | | | |

There were no samples collected and analysed as the site did not discharge any water from the licensed discharge points over the reporting period till the 2nd April 2024.

Talbragar Quarry Water Monitoring Location



Surface Water Monitoring Results - Corrections Log

Details of corrections made to published data due to incorrect or misleading data^{3.7.7}

| Date of data (sample date) | Old published data | Correct updated data | Reason for Update/Correction | Update Person | Date corrected data published | Comments |
|----------------------------|--------------------|----------------------|------------------------------|---------------|-------------------------------|----------|
| | | | | | | |
| | | | | | | |
| | | | | | | |
| | | | | | | |
| | | | | | | |